

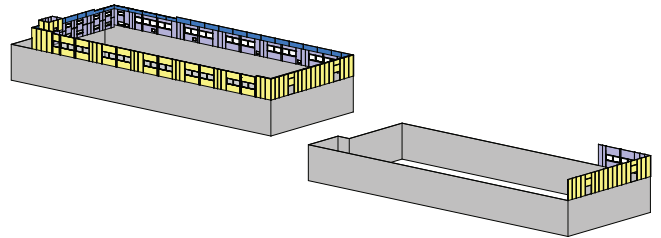


# HIRE KLOVER FOR YOUR DATA CENTER PROJECT

- » COMPLETE YOUR PROJECT **FASTER**, WITH GREATER **SCHEDULE CERTAINTY**.
- » IMPROVE **SAFETY** AND LOWER **ENVIRONMENTAL IMPACT**.
- » YOUR CLIENT WILL START **GENERATING REVENUE** MONTHS SOONER.



## Prefab vs. Field Built



At Prefab Completion, the Field-Built Method is just getting started.

### SPEED TO REVENUE

- » We recently erected a 55,000 sf exterior in **10 days vs. 6 months** required by traditional methods. How much is an **additional 5.5 months of Data Center Uptime** worth to your client?
- » Every panel is **custom manufactured** for your project and swung into place **quickly and safely** by a specialized rigging crew with thousands of hours of experience.
- » **KLOVER** panels often include air vapor barrier to provide a rapid “dry-in” condition that allows for completion of other critical trade work.

### SCHEDULE CERTAINTY

- » We lead coordination of all inputs during the critical design phase.
- » Follow the progress of your job on our detailed **milestone schedule** of the design and fabrication process with milestones for every step leading up to your install date.
- » Since 2009 **KLOVER** designs, manufactures and installs an annual average of **825,000 sf of wall panels in our 50,000 sf manufacturing plant**. This year alone we will provide **225,000 sf of data center specific panels**.

### SAFER BY DESIGN

- » **KLOVER'S** prefabrication methods **reduce work hours on site by up to 75%**.
- » Reduced man-hours are particularly important to vertical data center projects due to the amount of work performed up to 100 ft above grade.

### LOWER ENVIRONMENTAL IMPACT

- » On our most recent data center project, **KLOVER reduced fuel consumption by 3,600 gallons** by simplifying the delivery stream to the jobsite and reducing the use of equipment on site.
- » By cutting studs to custom lengths from coil material, **we saved 3,000 ft of steel** that would have been wasted with traditional methods.

