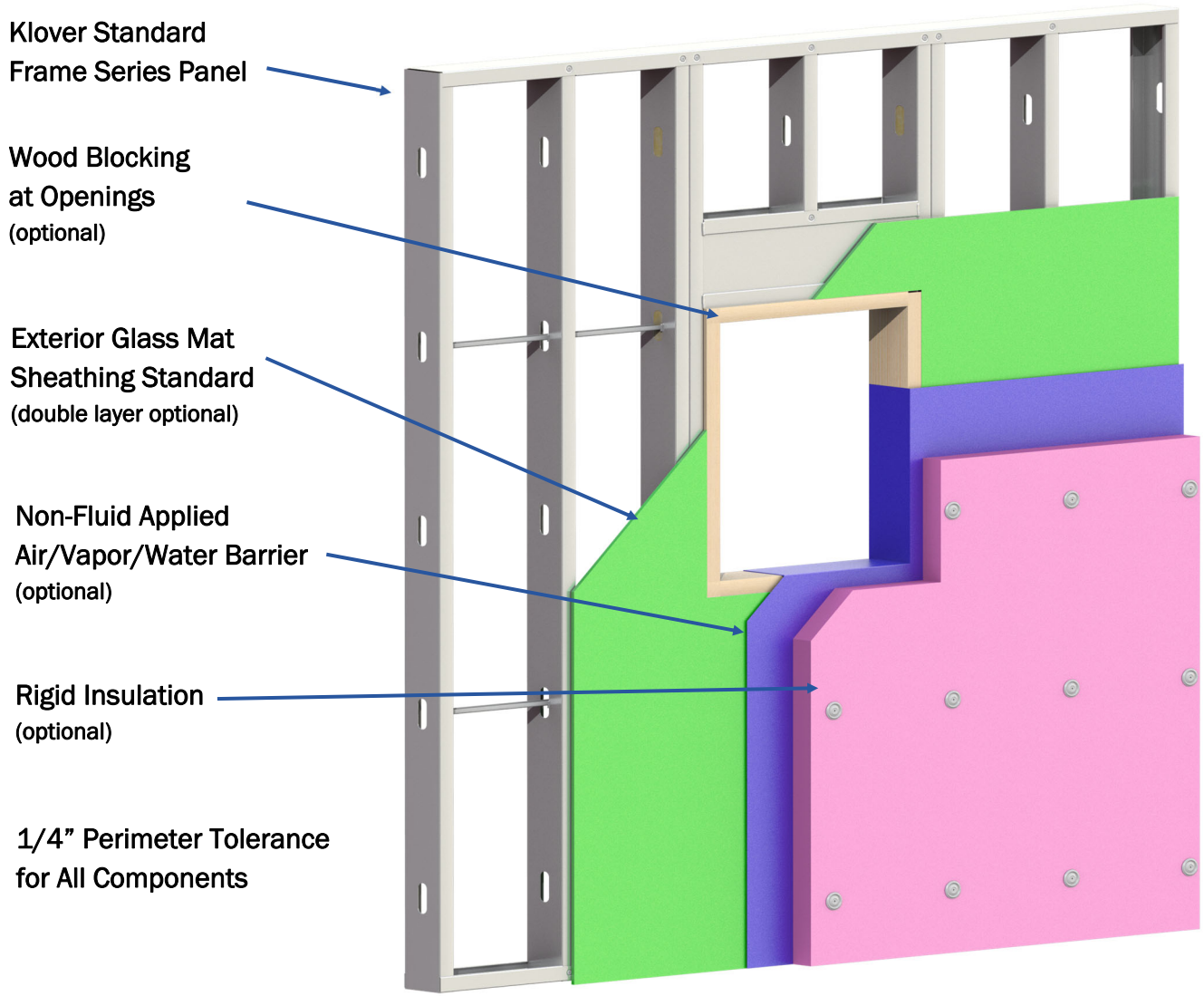
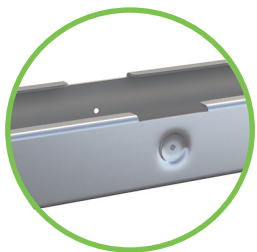


KWG-C **KLOVER WEATHER GUARD SERIES**
CURTAIN WALL PANEL
 PRODUCT DATA SHEET



Cold Formed Metal Studs (CFMS) are versatile, lightweight, non-combustible, have a high strength to weight ratio, economical, and when combined with gypsum board can provide up to four hours fire resistive rating.



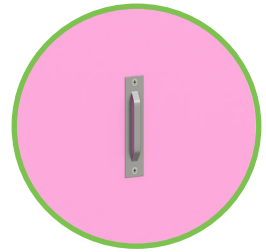
Track Flanges Pre-cut for Precise Stud Locations



Swaged Studs Eliminates Flare of Sheathing and Gypsum Wall Board



Dimpled Tracks Eliminate Fastener Standoff



Optional Factory Installed Brick Anchors

KWG-C Panel Information

Fast-track your next construction project by using Klover's KWG-C series wall system. Built upon our KSF-C framework, you choose the exterior sheathing, non-fluid applied air/vapor/water barrier, rigid foam insulation and optional wood blocking at framed openings. We *factory install* these components with quality allowing you to *compress* your project schedule.

Exterior Glass Mat Sheathing (Standard)

- ◆ Durable, exterior wall assembly substrate underlayment
- ◆ Repels and does not absorb water
- ◆ Improves air and wind infiltration performance
- ◆ Reduces noise transmission
- ◆ Fire-rated with 5/8" thickness
- ◆ Resists mold and mildew (ASTM D3273—score of 10)
- ◆ Can be exposed up to 12 months
- USG Securock® UltraLight Glass-Mat 1/2" (≈ 1.7 psf)
- USG Securock® UltraLight Glass-Mat 5/8" Firecode® X (≈ 2.2 psf)
- Georgia Pacific Densglass® 1/2" (≈ 1.9 psf)
- Georgia Pacific Densglass® Fireguard® 5/8" (≈ 2.5 psf)
- National Gypsum Gold Bond® eXP 1/2" (≈1.9 psf)
- National Gypsum Gold Bond® eXP Fire-Shield® 5/8" (≈ 2.5 psf)
- *Other products available upon request*

Non-Fluid Applied Air/Vapor/Water Barriers (Optional)

- ◆ Self-sealing around fastener penetrations
- ◆ Permeable (P) and non-permeable (NP) options
- ◆ Primers used where recommended by manufacturer
- ◆ Framed opening flashings supplied and installed
- Henry® Blueskin® SA Air and Vapor Barrier Membrane (NP)
- Henry® Blueskin® VP 160 Water Resistive Air Barrier Membrane (P)
- 3M™ Air and Vapor Barrier 3015 (NP)
- *Other non-fluid applied barriers available upon request*

Rigid Foam Board Insulation (Optional)

- ◆ R-5 per inch per ASTM C518 @ 75°F mean temperature
- ◆ Continuous insulation (CI), perm rating of 1.5 @ 1" thick
- ◆ ASTM E84 Flame Spread ≤15, Smoke Developed ≤175
- Owens Corning® Foamular® 250 Extruded Polystyrene (XPS)
- Dupont™ Styrofoam™ Extruded Polystyrene (XPS)
- *Other rigid insulation products available upon request*

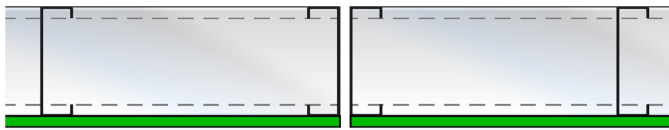
Insulated Sheathing (Optional)

- ◆ R-6 per inch polyiso laminated to wood sheathing
- ◆ Optional integrated air/vapor/water barrier
- Zip System™ by Huber Engineered Woods LLC
- Hunter Xci by Hunter Panels

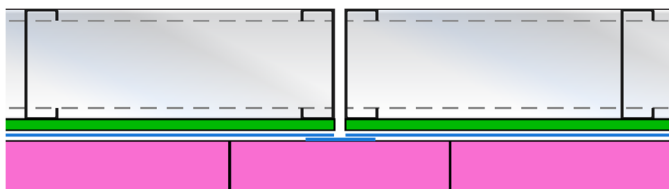
Wood Blocking at Openings (Optional)

- ◆ Allows wood attachment methods for windows and doors
- ◆ Variable depths to extend beyond studs into substrates
- ◆ Provides a thermal break at framed openings
- Fire-treated lumber/plywood
- Pressure treated lumber/plywood
- *Other materials available upon request*

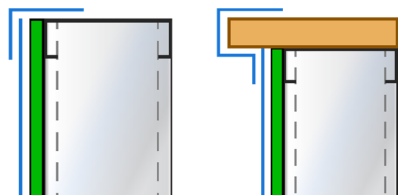
Air/Vapor/Water (AWB) Barrier Details



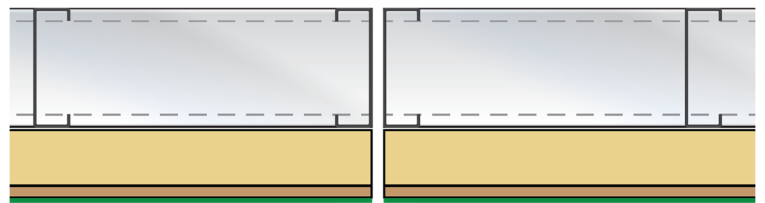
AWB Field Tape at Joint



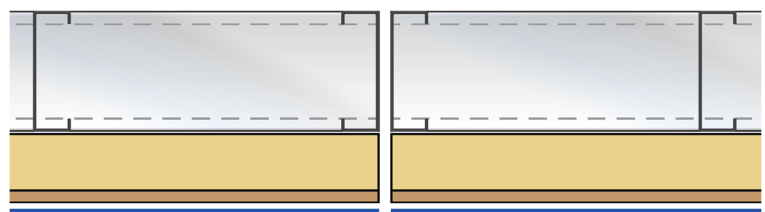
AWB under Exterior Insulation—Field Tape at Joint



AWB Wraps at Framed Openings



Insulated Sheathing w/Integrated AWB—Field Tape



Insulated Sheathing w/Factory Applied AWB—Field Tape

1121 Richland Commerce Dr., Suite B, Quakertown, PA 18951

T: (215) 536-7706 F: (215) 536-5470

www.kloverinc.com

©2021 Klover Inc. All rights reserved.

