

**KSF-L** **KLOVER STANDARD FRAME SERIES**  
**LOAD BEARING WALL PANEL**  
 PRODUCT DATA SHEET

Shear Wall HSS Post with Post Up (as required —becomes embedded plate at floor above)

HSS Distribution Beam Header (as required)

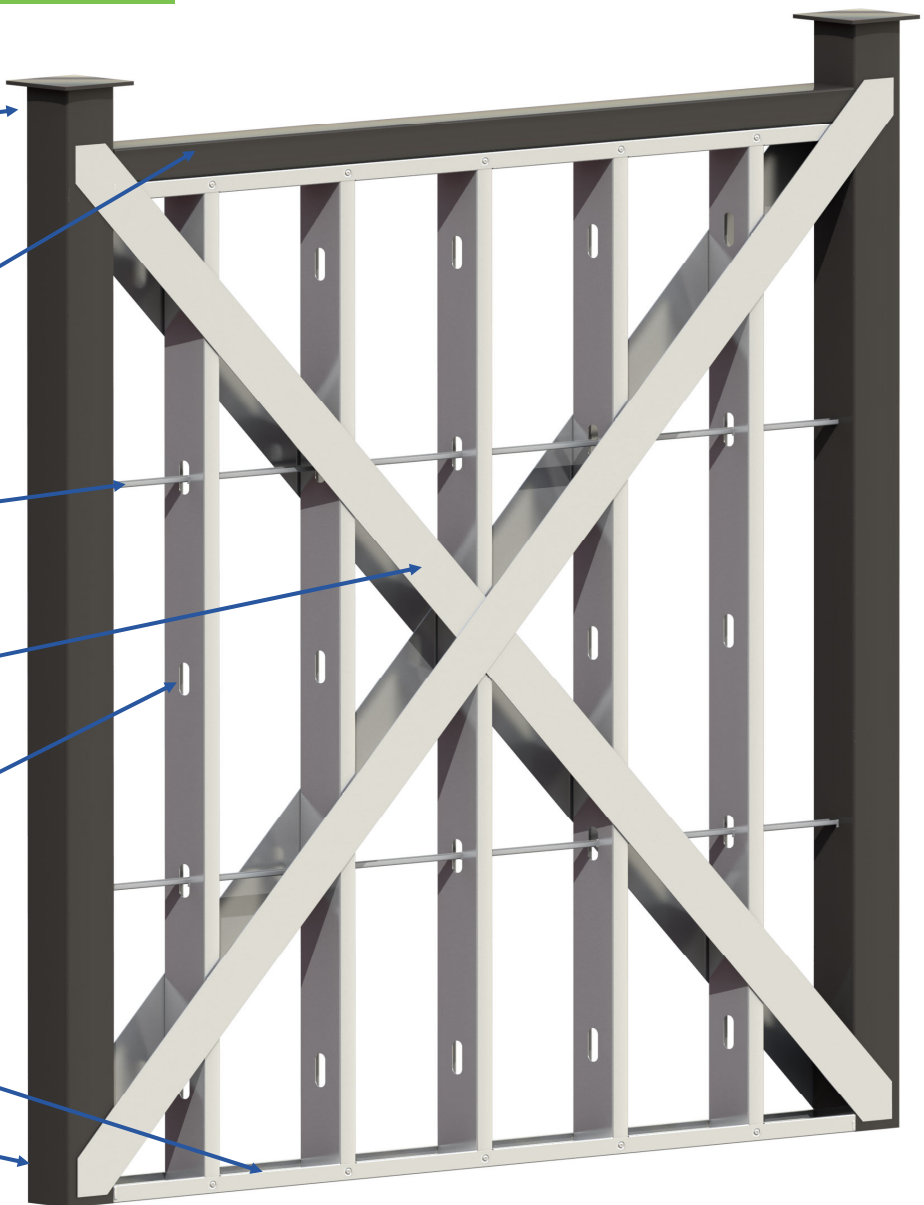
1-1/2" 16 Gauge U-Channel Bridging

Welded Shear Wall Flat Strapping (one or both sides)

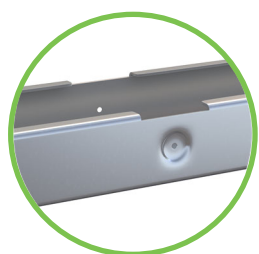
Custom Punched Service Holes (4"h x 1-1/2"w, 2' o.c., 1' from bottom)

Rolled Stud Top & Bottom Tracks

6-1/4" Wide System Standard



*Cold Formed Metal Studs (CFMS) are versatile, lightweight, non-combustible, have a high strength to weight ratio, economical, and when combined with gypsum board can provide up to four hours fire resistive rating.*



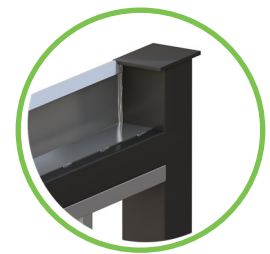
Track Flanges Pre-cut for Precise Stud Locations



Swaged Studs Eliminates Flare of Sheathing and Gypsum Wall Board



Dimpled Tracks Eliminate Fastener Standoff



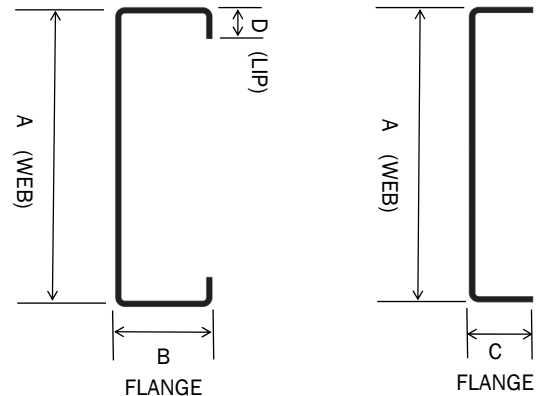
Optional Factory Installed Pour Stop

## KSF-L Panel Information

PANEL SIZE	STANDARD	OVERSIZED
WIDTH (W)	W < 12'8"	W > 12'8"
HEIGHT (H)	H < 35'0"	35' ≤ H ≤ 45'0"
WEIGHT	TYPICALLY RANGES FROM 8-16 PSF, NOT INCLUDING OPTIONAL WALL LAYERS OR FACADES	
F.H.W.A., STATE D.O.T. AND SOME LOCAL RESTRICTIONS (TIME OF DAY, WEATHER, HOLIDAYS ETC.) MAY APPLY TO OVERSIZE PANELS. ROAD LANE AND WEIGHT RESTRICTIONS MAY ALSO RESTRICT PANEL SIZES OR REQUIRE SPECIAL PERMITS.		

## Framing Member Sizes (determined by Klover Engineering)

GA	16	14	12	10
MIL	54	68	97	118
KSI	50			
"A"	4", 6.25"*, 8", 10"			
"B"	1-5/8", 2", 2-1/2", 3", 3-1/2"			
"C"	1-1/4", 1-1/2", 2", 3", 3-1/2"			
"D"	5/8"			
SIGMASTUD® AVAILABLE AS REQUIRED				
*ROLL FORMED STUDS ARE G90, OTHER MATERIALS G60 OR G90				



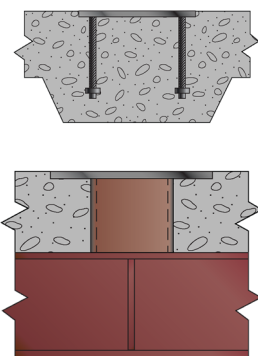
## Options

- ◆ Hollow structural steel (HSS) tubes can be integrated as vertical support members or load distribution beams.
- ◆ Welded flat strapping used to create shear walls. Varies from 4"-12" wide depending on loads.
- ◆ Available factory installed exterior wall products include air/vapor, water and thermal control layers and various rainscreen systems. Refer to Klover Weatherguard, Carrier System and Façade series panels for more details.

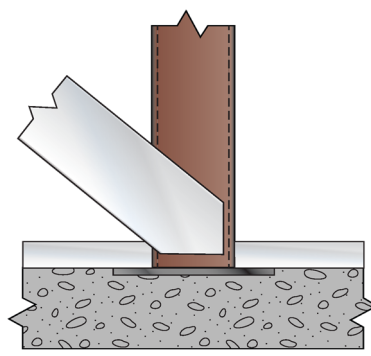
## Technical Specifications

Standard	Description
AWS D1.1	American Welding Society, Structural Welding Code, Steel
AWS D1.3	American Welding Society, Structural Welding Code, Sheet Steel
AISI 240	American Iron and Steel Institute, North American Standard for Cold-Formed Steel Structural Framing
ASTM A1003	Standard Specification for Steel Sheet, Carbon, Metallic- and Nonmetallic-Coated for Cold-Formed Framing Members
ESR-4576	International Code Council Evaluation Services Evaluation Report—Compliance with IBC and IRC

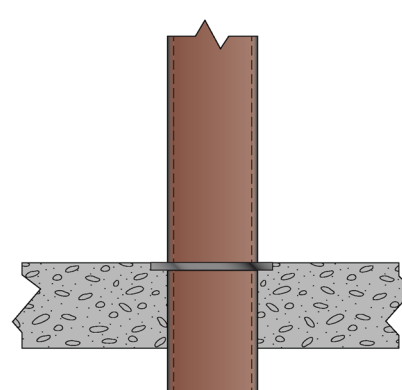
## Attachment Details



Embed Plates within Slab



Panel to Embed Plate at Post



HSS Post-Up  
(welded connection)



Powder Actuated Fasteners  
to Foundation

1121 Richland Commerce Dr., Suite B, Quakertown, PA 18951  
T: (215) 536-7706 F: (215) 536-5470

www.kloverinc.com  
©2021 Klover Inc. All rights reserved.

